

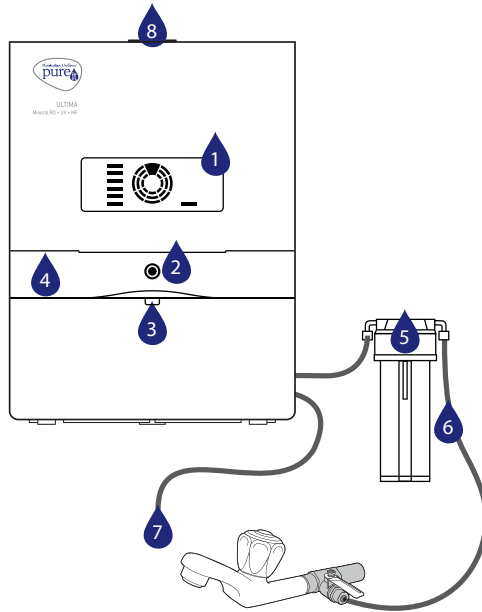
Welcome to the Pureit family



World's largest selling purifier company#

INSTRUCTION MANUAL

KNOW YOUR PUREIT ULTIMA MINERAL RO+UV+MF PURIFIER



- | | |
|-----------------------------|---------------------------------|
| 01. Digital display panel | 05. Pre-sediment filter |
| 02. Soft-touch button | 06. Inlet water tube |
| 03. Water dispensing outlet | 07. Reject water tube |
| 04. Neon flash belt | 08. Cleaning solution dispenser |

UNIQUE FEATURES OF PUREIT ULTIMA MINERAL RO+UV+MF PURIFIER



Digital Purity Indicator

Senses water quality upto 5000 times a second* to show* how pure* your water is.



Advanced 7 stage purification process with RO+UV+MF

Every drop of water you drink is sweet and always safe.



100% RO purified water

All water passes through RO ensuring no mixing of purified and impure water. Only RO can remove harmful chemicals like Lead, Mercury, etc.



Includes mineral cartridge

Enriches water by adding essential minerals like Calcium and Magnesium.



Double Purity Lock:

Advance Alert warns you 15 days before filter expiry and Auto Shut Off stops water if filter is not changed.

100% guarantee of safe and sweet water.



Large storage capacity of 10 litres

You will never run out of purified water.



High water saving up to 45%**

Saves significant water when ordinary ROs save only 25%.



Hi-speed purification of up to 28 litres/hour** (Highest among leading ROs**)

Purifies water required for the entire day in less than 1 hour***.

*Depends on your water quality. *Pure refers to TDS range of water. **You can see the quality of water through the Purity Indicator only when water is being purified or the purifier is in use. **Under test condition, Input TDS – 750 ppm, Turbidity – <1 NTU, Input Pressure – 10 psi, Input Hardness – 300 ppm, Temp. – Room temp. ***Assumption: 5 member family needing 20 litres of water every day (4 litres per person per day). **Pureit Ultima Mineral RO+UV+MF has highest purification rate across filters life when compared to leading RO brands (Kent Grand+ and Aquaguard Enhance RO+UV) - Under test condition, Input TDS – 1500 ppm, Turbidity – <1 NTU, Input Pressure – 10 psi, Input Hardness – 700 ppm, Temp. – Room temp.

PUREIT ULTIMA MINERAL RO+UV+MF PURIFIER'S ADVANCED PURIFICATION PROCESS



This is a graphic representation of filters

1. Pre-Sediment Filter (SF)

Removes fine and coarse particulate impurities/ dirt and improves life of the Carbon Filter.

2. Pre-RO Carbon Filter

Removes chlorine and organic impurities like harmful pesticides. It also adsorbs bad taste and odour-causing organic compounds from water.

3. Post-Carbon Sediment Filter

Removes remaining fine and coarse particulate impurities/dirt and improves life of RO Membrane.

4. RO Membrane

Removes dissolved salts, hardness, pesticides and heavy metals like arsenic, lead and mercury. It also removes microbial contaminants like bacteria, virus, protozoa and cysts.

5. UV Chamber

Acts as an additional stage of purification to further inactivate bacteria, virus and parasites to deliver safe water.

6. Post RO Carbon Filter

This level of purification acts as a polisher and enhances the taste of purified water.

7. Micro Filtration (MF) Membrane

Micro Filtration (MF) Membrane is added Post RO and UV, which ensures that the water is purified thrice!

INSTALLING YOUR PUREIT ULTIMA MINERAL RO+UV+MF PURIFIER

1. The purifier should be installed by a trained Pureit technician.
2. It can be wall-mounted or used as a table top purifier.
3. The purifier should be placed in area which is free of ants/insects/other pests.
4. The purifier should be placed close to the plumbed inlet connection (not more than 2 metres).
5. Do not install the purifier above any electric socket.
6. Avoid sharp bends to the pipes of the product.
7. Do not use an extension cord.
8. Make sure you test the input water TDS (Total dissolved salts) before installing the purifier. The maximum input TDS should not exceed 2000 PPM.

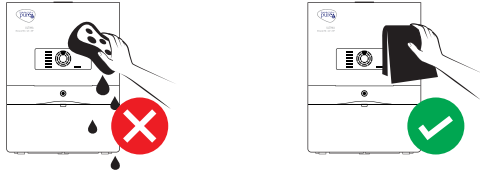
TAKING CARE OF YOUR PUREIT ULTIMA MINERAL RO+UV+MF PURIFIER

1. Use only the plug provided with the purifier.
2. The purifier should not be connected to any hot water tap. Do not run hot water over 45°C through the purifier.
3. Water from waste water tube is not suitable for drinking. You can use that water for gardening or to clean floors.
4. Store water only in the purifier and don't use other bottles and containers. If you do so, water may get contaminated.

Disposal Guidelines (Electrical): To prevent possible harm to the environment or human health from uncontrolled waste disposal, please separate electrical items in this product such as power supply adaptor, control circuits, LED panel, and wiring from other types of waste and recycle them responsibly to promote sustainable use of material resources. Contact either the retailer where you purchased this product, or local government office for details of where and how these items can be taken for environmentally safe recycling.

CLEANING & MAINTENANCE

Dispenser



1. Do not use detergents, soap or wet cloth to clean the external parts. Use dry and soft cloth to clean the front cover. It is recommended to use a 3M mop cloth for this.
2. Clean the dispenser by using disinfectants like bleach/hypochlorite (50 PPM available chlorine). Discard 2 litres of water after cleaning the dispenser.
3. Do not use any cleaning solution to clean the Digital Display Panel. Damages ensuing thereof are not covered under warranty.

Storage Tank

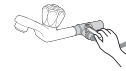


1. Discard the water in the storage tank once in 15 days.
2. Drain the water in the storage tank if purifier is not used for 2 days.
3. Clean the storage tank once a month with disinfectant solution. To purchase this solution, call us at 1860-210-1000 now.
4. How to clean the tank: Open the cleaning solution dispenser and put 1 ml of the disinfectant solution (10-15 drops) into the storage tank. (Ensure the tank is full). Drain the entire tank after 10 minutes.
5. No foreign material (like dust/ants/insects/other pests) should enter the storage tank. The filtered water in the storage tank may deteriorate in the process.

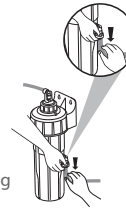
6. The point-of-use reverse osmosis drinking water treatment systems addressed by NSF-58 standard are designed to be used for the reduction of specific substances that may be present in drinking water supplies (public or private) which are considered to be microbiologically safe and are of known quality.
7. The output water may continue to have flora which are harmless and pose no health hazard to normal healthy adults and children.

Sediment Filter

STEP 1 :
Close the ball valve before opening ESF housing for cleaning



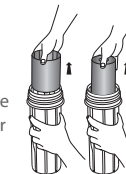
STEP 2 :
Remove the water inlet tube which is attached to the housing



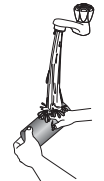
STEP 3 :
Rotate the housing clock-wise and remove it completely from the cap



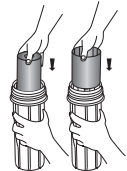
STEP 4 :
Take out the grey coloured Carbon Sleeve and the Sediment Filter from the housing



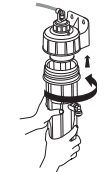
STEP 5 :
Clean the Sediment Filter under jet of water, rub by hand / tap gently to clean



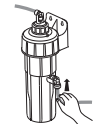
STEP 6 :
After cleaning the Filter, put it back in the housing and then put the grey coloured Carbon Sleeve back into the housing



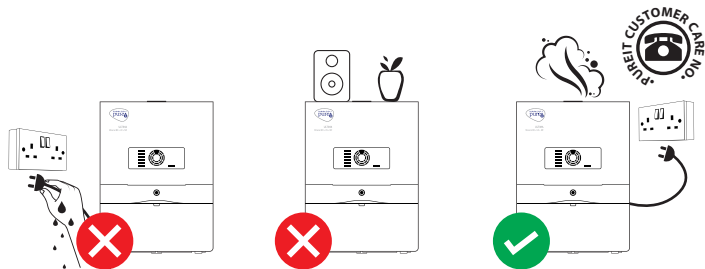
STEP 7 :
Insert the housing inside the cap and rotate it anticlockwise to engage the threads Ensure the housing is tightened till it's original marking



STEP 8 :
Connect the water inlet tube to the housing



KEEP YOURSELF SAFE



- Do not open the purifier for cleaning or for any replacements. This can be done only by a qualified company personnel or an authorized agent.
- Do not plug or unplug the power cord with wet hands to avoid any untoward accident due to electrical shock or fire.
- Do not splash the filtration system with water while cleaning.
- Do not put heavy or sharp objects on the purifier.
- Never put the cord near stoves or heaters.
- If the power cord is damaged, the power adapter must be replaced and not used
- Always switch-off the “Ball Valve” and electrical power in case you notice any leakage from the purifier or you are out of home for more than 2 days.
- Ensure input pressure is more than 10 PSI and less than 30 PSI ***
- In case UV lamp breaks, carefully sweep all the fragments, wipe the area with a wet towel, and dispose all the fragments including the used towel in a sealed plastic bag. Open windows to allow room to ventilate. Do not use vacuum cleaner. Hand over the bag to the service technician for proper disposal of the same when he visits to replace UV lamp.
- In case of any smoke or burning smell, switch-off power, remove the plug immediately and call us at 1860-210-1000.

TECHNICAL SPECIFICATIONS

Pureit Ultima Mineral RO+UV+MF	
Height	~485 mm
Width	~360 mm
Depth	~311 mm
Weight of Pureit Ultima Mineral	~9.5 kg
RO+UV+MF	
Flow rate*	Approximately 28 litres per hour
Storage tank capacity	10 litres**
7-Stage Purifying Technology	PP Melt Blown Pre-Sediment Filter, Pre-RO Carbon Filter, Post-Carbon Sediment Filter, Reverse Osmosis Membrane, UV Chamber, Post-RO Carbon Filter and Micro Filter (MF) Membrane
Membrane type	Thin-film composite spiral wound
Pump type	Diaphragm pump, 24V dc
% Recovery*	Typically 45%
TDS reduction***	90% (min)
Input water pH range	6.5–8.5
Inlet Water Temperature	10°C to 40°C
Power rating	60 Watts
Pressure rating	10–30 PSI****
Rated Voltage	100–240 Va.c 50/60 Hz (100–300 Va.c 50/60 Hz)
Material of construction for plastic parts	Food grade, non-toxic, engineering grade plastics
Length of Power cord	1.5 metres
Total Dissolved Solids in input water	Upto 2000 mg/lit#
Total hardness of input water	500 mg/lit (max)
Iron in input water	0.3 mg/lit (max)###
Turbidity of input water	1NTU (max)
Germkill Kit™	
Material of construction	Food safe, non-toxic, engineering-grade plastics
Germkill Kit -1	Pre-Sediment Filter – 1 No. Pre-RO Carbon Filter – 1 No. Post-RO Carbon Filter – 1 No.
Germkill Kit -2	Pre-Sediment Filter – 1 No. Pre-RO Carbon Filter – 1 No. Post-RO Carbon Filter – 1 No. Post-Carbon Sediment Filter – 1 No. RO Membrane – 1 No. TDS Modulator – 1 No.
Germkill performance standard	Meets stringent international criteria for microbiologically safe drinking water – e.g., Environmental Protection Agency (EPA), USA

* Permeate flow rate and recovery are based on standard test conditions and may vary depending on input water quality, TDS, pressure and life of Filter elements.

** 10 litres of storage only with running water. Or else 9.2 litres of water dispensing.

*** Input water quality and TDS content are important determinants of output water quality.

**** If input pressure exceeds 30 PSI, please install a company provided pressure reducing valve at an additional cost.

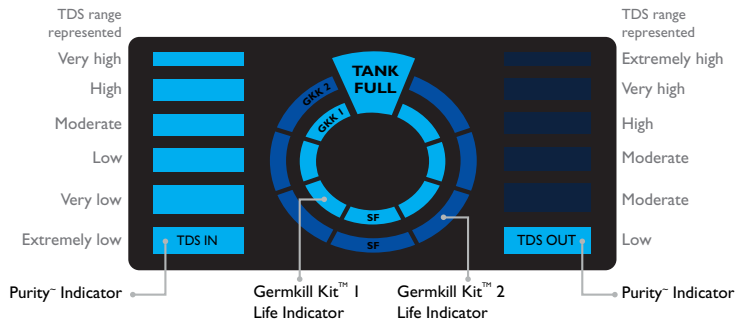
If the pressure is lesser than 5 PSI then you need to buy 'Pressure enhancing pump' at an additional cost. Device should not be installed in a house where input pressure is greater than 60 psi.




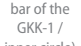

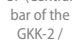
Technical specifications are subject to change or improvement without prior notice.

In case the TDS is >1000 ppm, a company provided anti-scalant is recommended to be installed, this has to be purchased at extra cost.

If the iron content in the input water is more, it is recommended to install a company provided iron filter.

UNDERSTANDING THE DIGITAL DISPLAY PANEL



Indicator	Indicator Status	Frequency of Indication	Indication
 Purity Indicator	Blue bars on the left and right of the Digital Panel	When there is input water in the purifier	Shows the indicative range of TDS in the input and output water respectively. The level of these bars will change depending on the input water
 Tank Full	No light Blue	N/A N/A	Tank is not full Tank is full
 SF (Central bar of the GKK-1 / inner circle)	Blue	N/A	Pre-Sediment Filter is safe to use
 GKK-1	Central bar of the GKK-1 circle (inner circle) will blink Blue and the Call Centre number (1860-210-1000) will be displayed on the panel	177-180 days of clock time or 147-150 hours of pump running time, whichever is earlier after device installation or GKK-2 replacement	This indicates that the life of the Pre-Sediment Filter will end soon. Please get your Pre-Sediment Filter cleaned/replaced. If the sediment filter is not cleaned/replaced in time, it may affect the performance of the purifier
 GKK-2	Blue	N/A	Pre-Sediment Filter is safe to use
 SF (Central bar of the GKK-2 / outer circle)	Central bar of the GKK-2 circle (outer circle) will blink Blue and the Call Centre number (1860-210-1000) will be displayed on the panel	525-540 days of clock time or 450 hours of pump running time, whichever is earlier after GKK-1 replacement	This indicates the life of the Pre-Sediment Filter will end soon. Please contact the Pureit helpline and get your Pre-Sediment Filter replaced. If the sediment filter is not replaced in time, it may affect the performance of the purifier

 GKK-1	Blue Last bar of the GKK-1 circle (inner circle) blinks, 'CHANGE GKK' blink at the centre of the panel and the call centre number '1860-210-1000' illuminated at the bottom of the panel	N/A After every 345 days of clock time or 285 hours of pump running time, whichever is earlier, post-device installation or GKK-2 replacement	GKK-1 is safe to use GKK-1 life will end soon. Please contact the Pureit helpline to replace your GKK-1
 GKK-1	Last bar of the GKK-1 circle (inner circle) blinks, 'CHANGE GKK' static at the centre of the panel and the call centre number '1860-210-1000' illuminated at the bottom of the panel	After every 360 days of clock time or 300 hours' of pump running time, whichever is earlier, post-device installation or GKK-2 replacement	GKK-1 life is completed and must be replaced. At this point, Auto Shut Off shuts the water flow ensuring you don't drink unsafe water even by accident
 GKK-2	Blue Last bar of the GKK-2 circle (outer circle) blinks, 'CHANGE GKK' blink at the centre of the panel and the call centre number '1860-210-1000' illuminated at the bottom of the panel	N/A After every 705 days of clock time or 585 hours of pump running time, whichever is earlier, after device installation or previous GKK-2 replacement	GKK-2 is safe to use GKK-2 life will end soon. Please contact the Pureit helpline to replace your GKK-2
 GKK-2	Last bar of the GKK-2 circle (outer circle) blinks, 'CHANGE GKK' static at the centre of the panel and the call centre number '1860-210-1000' illuminated at the bottom of the panel	After every 720 days of clock time or 600 hours of pump running time, whichever is earlier, after device installation or previous GKK-2 replacement	GKK-2 life is completed and must be replaced. At this point, Auto Shut Off shuts the water flow ensuring you don't drink unsafe water even by accident
 Guided Alert System	Not visible Red band illuminated	N/A In case of a specific electrical fault	Purifier is safe to use Indicates where the fault is in the purifier. At this point, Auto Shut Off shuts the water flow ensuring you don't drink unsafe water even by accident. Please contact the Pureit helpline to repair the fault.

*Purity refers to the TDS range of water. TDS (Total Dissolved Solids) indications are measured on the basis of conductivity of output water and this conductivity depends on 1) mobility of ions 2) valency of ions 3) concentration of ions and 4) the temperature of water. The display of TDS values is an indicative range and not an absolute value. Purity Indicator will only function when there is input water in the purifier. In case there is no input water in the purifier, then the Digital Display Panel will show an error and there will be one band lit on either side of the panel. This is a default state indication and does not reflect the Purity Level of water. You can see the quality of water through the Purity Indicator only when water is being purified or the purifier is in use. Quality here refers to the TDS range of water.

#After every 300 hours of pump running time or 360 days of clock time, whichever is earlier, the respective Germkill Kit needs to be changed.

Every 300 hours of pump running time typically gives 4000 litres of purified water under test conditions of 10 PSI input pressure, 750 ppm TDS and 25 °C temperature. Any variations from the test conditions will lead to variations in the ltered life. While the Germkill Kits and the Sediment Filter have a xed replacement schedule, you might be required to clean/change the SF in the interim depending on the quality of your input water.

Pureit Ultima Mineral RO+UV+MF has been designed in such a way that during the first time startup of the device, the "Tank Full" indicator will blink for 15 minutes (maximum) and then normalise for usage.

What is the storage capacity of Pureit Ultima Mineral RO+UV+MF?

Pureit Ultima Mineral RO+UV+MF has a storage tank capacity of 10 litres with running input water. With no continuous input water, the average dispense capacity is 9.2 litres. The process of filling the storage tank is fully automatic and when you take water out of the tank, the purification process automatically starts and refills the storage tank.

How much time it takes to purify water in Ultima Mineral RO+UV+MF?

Ultima Mineral RO+UV+MF can purify water upto 28 litres per hour. However, the time taken to purify depends on the life of the Filters, the input water pressure, TDS and other impurities present in water.

How will I get new Consumables/Membranes replaced?

You need to call the Pureit Helpline and order for a Germkill Kit. Our technician will visit your place and replace the Germkill Ki at a nominal cost.

What should I do if there is no water being dispensed from the tap?

In case you cannot dispense water from the tap, then you need to first check whether the power supply is on. If it is on, then check if there are any fault indicators illuminated, or "CHANGE GKK" and the Call Centre Number is illuminated on the Digital Display Panel. Call the Pureit helpline and get either the fault resolved or Germkill Kit replaced.

If none of these lights are illuminated on the Digital Display Panel, then check if the Ball Valve is closed. If none of these cases are true, then please call Pureit Helpline for assistance.

Can I use any type of water to purify through my Pureit Ultima Mineral RO+UV+MF?

Pureit Ultima Mineral RO+UV+MF will purify "potable" water for removal of hardness and other impurities to give you safe drinking

water. If the input water has impurities normally not present in drinking water (high iron/ turbidity/ microbial contamination etc.) or water is from unknown source (river/lake/pond /borewell etc.) then suitable pre-treatments may be required.

The Advance Alert System did not give me 15 days warning before the purifier stopped working. Why is it so?

There may be several reasons for this:

While the Germkill Kits and the Pre-Sediment Filter have fixed replacement schedules, depending on your input water quality the Pre-Sediment Filter might need a replacement or cleaning even before the purifier gives you an alert. In such cases, please contact Pureit helpline on 1860-210-1000 and get the Pre-Sediment Filter cleaned or replaced. The purifier will communicate the alert only if the purifier is in a switched on condition during the scheduled alert time. Post the completion of the scheduled alert time, Auto Shut off of water will be activated automatically for GKK, even if the purifier is in a switched off condition.

Does Pureit Ultima Mineral RO+UV+MF remove arsenic, flouride and nitrates?

Like ions, the RO technology can also remove arsenic, flouride and nitrates

Can I use the reject water? What can I do with the Reject Water?

It can be used for gardening or cleaning floors, but is not fit for consumption.

What should I do if any part of the purifier is broken?

Please call the Pureit Helpline. We will guide you on the repairs required. You would need to buy the replacement parts at an additional cost.

What should I do if there is a leakage from the purifier?

Turn off the Ball Valve and switch off the power, if you find any failure. Check for any visually improper fitments and then call our Pureit Helpline at 1860-210-1000 and register a service request.

How long the stored water in Pureit Ultima Mineral RO+UV+MF can be used for drinking?

You can use stored water for 2 days. If it is not used for more than 2 days we advice you to discard that water, refill and then consume.

How do I know when I have to change my Germkill Kit?

Pureit Ultima Mineral RO+UV+MF has a Digital Display System that will flash a message "Change GKK" to prompt you to call the call centre to get the respective GKK changed, whenever the life of the Germkill Kit is about to get over. (Please refer to the "Understanding The Digital Display Panel" section of this user manual, for further details).

Can the Pre-Sediment Filter or the other filter parts choke before the Advance Alert?

While the Germkill Kits and the Pre-Sediment Filter have a fixed replacement schedule, you might be required to change the filters in the interim depending on the quality of your input water.

Should the tap flow rate be very less or if it is taking too long for the tank to fill, then please contact the Pureit helpline at 1860-210-1000 to change the membranes. These extra visits will be chargeable as per T&C.

Will I be able to dispense water from the purifier in case the red band of "Guided Alert System" gets illuminated OR the water is Auto Shut-Off?

In case any red band of "Guided Alert System" illuminates, the purification process will stop, until the fault is fixed. But, you will be able to dispense out the water available in the storage tank by pressing the Soft-Touch button. Once pressed, the button will operate and dispense for 2 minutes or till the water is available in the tank or whichever is earlier.

For how long can I continuously dispense water?

Once pressed, Soft-Touch button dispenses water for 5 minutes and it automatically stops dispensing after that. In case you need more water, you need to press the button again. You

can stop the flow of water in between by pressing the Soft-Touch button again.

Will the Guided Alert System indicate any leakage complaints?

No. It only indicates key electrical faults.

What should I do if the water from the purifier tastes unusual or the purification is taking more time?

Please call the Pureit helpline at 1860-210-1000. Our technician will visit you and help you resolve all the issues.

Why is the output water blue in colour?

The blue colour in the output water is because of the lighting system built in the purifier.

What are the ideal usage conditions for an RO technology based water purifier?

The point-of-use reverse osmosis drinking water treatment systems addressed by NSF-58 standard are designed to be used for the reduction of specific substances that may be present in drinking water supplies (public or private) which are considered to be microbiologically safe and are of known quality.

What do I do if a Guided Alert System band is illuminated?

In case of any electrical fault, a segment of the red band will illuminate to indicate where the fault is. If it is illuminated, please call the Pureit Helpline at 1860-210-1000 for assistance.





WORLD'S LARGEST SELLING WATER PURIFIER COMPANY[#]



WIDE RANGE OF RO PURIFIERS FROM PUREIT

[#]Based on unit shipment sales for 2016; excludes pitchers and faucet mount system sales. The analysis includes in-home point-of-use water treatment systems only.

Disclaimer: All images used in this manual are illustrative and the actual product may differ.